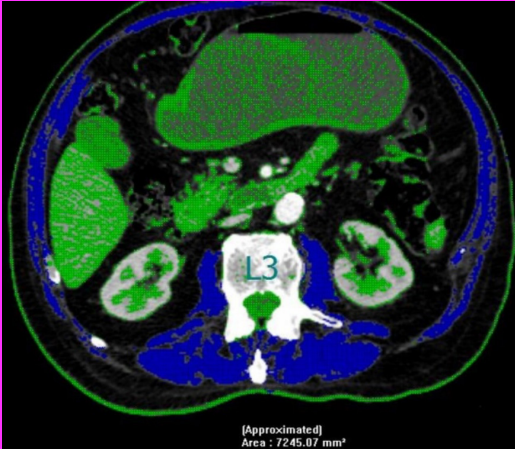
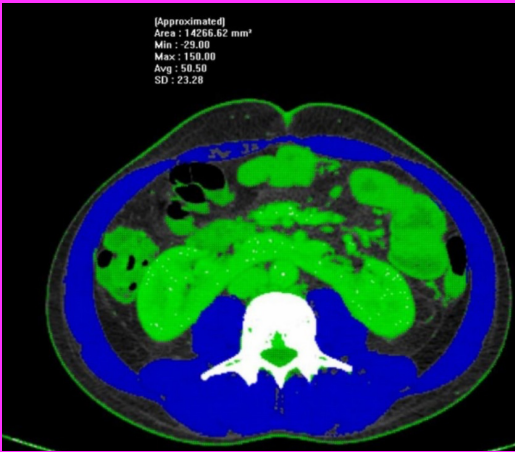


BEZMİÂLEM science



▼ **Sarcopenia is Associated with Postoperative Complications in Patients Undergoing D2 Gastrectomy for Gastric Cancer**

Ali ALEMDAR, Özgür BAHADIR, Recep Yılmaz BAYRAKTARLI, Suzan Deniz ÖNOL, İsmail YILMAZ

▼ **Morphometric Analysis of the Foramen Palatinum Majus by Cone-beam Computed Tomography**

Melek TAŞŞÖKER, Duygu AZMAN, Anil Didem AYDIN KABAKÇI

▼ **Ivermectin Induces Oxidative Stress and DNA Damage in Breast Cancer Cells**

Eray Metin GÜLER, Ayşenur GÜNAYDIN AKYILDIZ

▼ **The Medicinal Effects of Different Solvent Extracts of *Pyracantha Coccinea* Roem. Fruits: Heavy Metal Content, Antioxidant, and Antimicrobial Properties**

Neslihan Tekin KARACAER

Volume 11 • Issue 1 • January 2023

bezmialemscience.org

Editor in Chief

Adem AKÇAKAYA

Department of General Surgery, Bezmialem Vakıf University
School of Medicine, İstanbul, Turkey

Associate Editors

Fahri AKBAŞ

Department of Medical Biology, Bezmialem Vakıf University
School of Medicine, İstanbul, Turkey

Atilla AKDEMİR

Department of Pharmacology (Computer Aided Drug
Discovery Lab.), Bezmialem Vakıf University Faculty of
Pharmacy, İstanbul, Turkey

Fadlullah AKSOY

Department of Otorhinolaryngology, Bezmialem Vakıf
University School of Medicine, İstanbul, Turkey

İbrahim AYDOĞDU

Department of Pediatric Surgery, Bezmialem Vakıf University
School of Medicine, İstanbul, Turkey

Simona CAVALU

Faculty of Medicine and Pharmacy, University of Oradea,
Oradea, Romania

Hayrettin DAŞKAYA

Department of Anesthesiology and Reanimation, Bezmialem
Vakıf University School of Medicine İstanbul, Turkey

Remzi DOĞAN

Department of Otorhinolaryngology, Bezmialem Vakıf
University School of Medicine, İstanbul, Turkey

Bülent DURDU

Department of Infectious Diseases and Clinical Microbiology,
Bezmialem Vakıf University School of Medicine, İstanbul,
Turkey

Mehmet Burak GÜNEŞER

Department of Endodontics Bezmialem Vakıf University
School of Dentistry, İstanbul, Turkey

Özlem KARA

Department of Pediatric Gastroenterology, Hepatology and
Nutrition, İstanbul University School of Medicine, İstanbul,
Turkey

Muharrem KISKAÇ

Department of Internal Medicine, Bezmialem Vakıf University
School of Medicine, İstanbul, Turkey

Alis KOSTANOĞLU

Department of Physiotherapy and Rehabilitation, Bezmialem
Vakıf University School of Health Science, İstanbul, Turkey

Özlem SU KÜÇÜK

Department of Dermatology, Bezmialem Vakıf University
School of Medicine, İstanbul, Turkey

Sedat MEYDAN

Department of Medical Anatomy, Bezmialem Vakıf University
School of Medicine, İstanbul, Turkey

İlker ÖZ

Department of Radiology, Bezmialem Vakıf University, İstanbul,
Turkey

Pınar ÖZCAN

Department of Gynecology and Obstetrics, Bezmialem Vakıf
University School of Medicine, İstanbul, Turkey

Biostatistics Consultant

Ömer UYSAL

Department of Biostatistics and Medicine Informatics, Division
of Basic Medical Sciences, İstanbul Cerrahpaşa University
School of Medicine, İstanbul, Turkey

Editorial Board

Abdürrahim KOÇYİĞİT

Department of Medical Biochemistry, Bezmialem Vakıf
University School of Medicine, İstanbul, Turkey

Ahmet BELCE

Department of Biochemistry, Biruni University School of
Medicine, İstanbul, Turkey

Amrita BANERJEE

Department of Pharmaceutical Sciences, North Dakota State
University School of Pharmacy, Fargo, ND, USA

Anne-Catherine ANDRES

Department of Clinical Research, University of Bern School of
Medicine, Switzerland

Artur BEKE

Department of Obstetrics and Gynecology, Semmelweis University School of Medicine, Budapest, Hungary

Arzu TEZVERGİL MUTLUAY

Department of Prosthetic, University of Turku School of Medicine, Turku, Finland

Atilla EROĞLU

Department of Thoracic Surgery, Ataturk University School of Medicine, Erzurum, Turkey

Claudio T. SUPURAN

Department Neuropharma, University of Florence School of Medicine, Firenze, Italy

Gökçen BAŞARANOĞLU

Department of Anesthesiology and Reanimation, Bezmialem Vakif University School of Medicine, İstanbul, Turkey

Gülaçtı TOPÇU

Dean of the Faculty of Pharmacy, Bezmialem Vakif University, İstanbul, Turkey

Hayat ÖNYÜKSEL

Department of Biopharmaceutical Sciences, UIC Faculty of Pharmacy, Illinois, USA

İsmail MERAL

Department of Medical Physiology, Bezmialem Vakif University, İstanbul, Turkey

İsmet KIRPINAR

Department of Psychiatry, Bezmialem Vakif University School of Medicine, İstanbul, Turkey

Jie ZHOU

Department of Anesthesiology, Peroperative and Pain Medicine, Brigham and Women's Hospital, Harvard Medical School, Boston, MA, USA

Joachim FANDREY

Department of Physiology, Duisburg University School of Medicine, Duisburg, Germany

Klaus W. GRAETZ

Department of Cranio-Maxillo-Facial and Oral Surgery, University of Zurich School of Medicine, Zurich, Switzerland

Martina MUCKENTHALER

Clinic of Pediatric Oncology, University Medical Center of Schleswig-Holstein, Heidelberg, Germany

Max GASSMAN

Department of Veterinary Physiology, University of Zurich, Institute of Veterinary Physiology, Zurich, Switzerland

Mukkades EŞREFOĞLU

Department of Histology and Embryology, Bezmialem Vakif University, İstanbul, Turkey

Oliver ULRICH

Department of Anatomy, University of Zurich School of Medicine, Zurich, Switzerland

Orhan ÖZTURAN

Department of Otolaryngology, Bezmialem Vakif University School of Medicine Hospital, İstanbul, Turkey

Özlem DURMAZ

Department of Pediatric Gastroenterology, Hepatology and Nutrition, İstanbul University School of Medicine, İstanbul, Turkey

Renate GAY

Department of Rheumatology, University of Zurich School of Medicine, Zurich, Switzerland

Steffen GAY

Department of Rheumatology, University of Zurich School of Medicine, Zurich, Switzerland

Suhair SUNOQROT

Department of Pharmacy, Al-Zaytoonah University of Jordan School of Pharmacy, Amman, Jordan

Şahabettin SELEK

Department of Medical Biochemistry, Bezmialem Vakif University School of Medicine, İstanbul, Turkey

Thomas A. LUTZ

Department of Veterinary Physiology, University of Zurich School of Medicine, Zurich, Switzerland

Tufan KUTLU

Department of Pediatric Gastroenterology and Hepatology, İstanbul University Cerrahpasa School of Medicine, İstanbul, Turkey

Ufuk ÇAKATAY

Department of Biochemistry, İstanbul University Cerrahpasa School of Medicine, İstanbul, Turkey

Ülkan KILIÇ

Department of Medical Biology, University of Health Science School of Medicine, İstanbul, Turkey

Yener YÖRÜK

Department of Thoracic Surgery, Trakya University School of Medicine, Edirne, Turkey

AIMS AND SCOPE

Bezmialem Science is an independent, unbiased, international online journal that publishes articles in all branches of medicine in accordance with the double-blind peer-review process. The print version of the journal is not available and it is only accessible at www.bezmialemscience.org.

The manuscripts published on this web page can be read free of charge and files can be downloaded in PDF format. Four issues are released per year (January, April, July, October). The publication language of the journal is English.

The target population of this journal includes medical academicians, specialists, assistants, and medical students. The aim of the journal is to publish high-ranking original researches in basic and clinical sciences, reviews covering contemporary literature about medical education and practice, reports of rare cases, and manuscripts that would contribute to continuous medical education.

The editorial and publication process of Bezmialem Science are shaped in accordance with the guidelines of the International Committee of Medical Journal Editors (ICME), World Association of Medical Editors (WAME), Council of Science Editors (CSE), Committee on Publication Ethics (COPE), European Association of Science Editors (EASE), and National Information Standards Organization (NISO). The journal is in conformity with the Principles of Transparency and Best Practice in Scholarly Publishing.

Bezmialem Science indexed in Web of Science-Emerging Sources Citation Index, TUBITAK ULAKBIM, EBSCO, Index Copernicus, Gale, CABI, ProQuest, CINAHL, Türk Medline, Türk Atıf Dizini, İdealOnline, J-Gate, DOAJ, Hinari, GOALI, ARDI, OARE, AGORA.

Title: Bezmialem Science

Official abbreviation: Bezmialem Science

E-ISSN: 2148-2373

Open Access Policy

This journal provides immediate open access to its content on the principle that making research freely available to the public supports a greater global exchange of knowledge.

Author(s) and copyright owner(s) grant access to all users for the articles published in the Bezmialem Science as free of charge. Articles may be used provided that they are cited.

Open Access Policy is based on rules of Budapest Open Access Initiative (BOAI). By "open access" to [peer-reviewed research literature], we mean its free availability on the public internet, permitting any users to read, download, copy, distribute, print, search, or link to the full texts of these articles, crawl them for indexing, pass them as data to software, or use them for any other lawful purpose, without financial, legal, or technical barriers other than those inseparable from gaining access to the internet itself. The only constraint on reproduction and distribution, and the only role for copyright in this domain, should be to give authors control over the integrity of their work and the right to be properly acknowledged and cited.

Bezmialem Science does not demand any subscription fee, publication fee or similar payment for access to electronic resources.

Creative Commons

A Creative Commons license is a public copyright license that provides free distribution of copyrighted works or studies. Authors use the CC license to transfer the right to use, share or modify their work to third parties. This journal is licensed under a Creative Commons Attribution-NonCommercial 4.0 International (CC BY-NC-ND 4.0) which permits third parties to share and adapt the content for non-commercial purposes by giving the appropriate credit to the original work.

Open access is an approach that supports interdisciplinary development and encourages collaboration between different disciplines. Therefore, Bezmialem Science contributes to the scientific publishing literature by providing more access to its articles and a more transparent review process.

Advertisement Policy

Potential advertisers should contact the Editorial Office. Advertisement images are published only upon the Editor-in-Chief's approval.

Material Disclaimer

Statements or opinions stated in articles published in the journal do not reflect the views of the editors, editorial board and/or publisher; The editors, editorial board and publisher do not accept any responsibility or liability for such materials. All opinions published in the journal belong to the authors.



Editorial Office

Prof. Dr. Adem AKÇAKAYA

Address: Bezmialem Vakif University, Adnan Menderes Boulevard, Fatih, Istanbul/Turkey

Phone: +90 (212) 453 17 00

Fax: +90 (212) 533 68 55

E-mail: info@bezmialemscience.org

Publisher Info

Galenos Publishing House

Address: Molla Gürani Mahallesi Kaçamak Sokak No: 21 34093 Fındıkzade - Istanbul/Turkey

Phone: +90 (212) 621 99 25

E-mail: info@galenos.com.tr

INSTRUCTIONS TO AUTHORS

The journal Bezmialem Science is a periodical in electronic format in accordance with the principles of independent, unbiased, and double-blinded peer-review. Four issues are published per year, in January, April, July, October.

The print version of the journal is not available, and it is only accessible at www.bezmialemscience.org. The manuscripts on this web page are accessible free of charge, and full-text PDF files can be downloaded.

Bezmialem Science does not charge any fee for article submission or processing.

Authors should submit manuscripts only to the web page at www.bezmialemscience.org. Manuscripts sent by other means will not be evaluated. The full text of the manuscripts should be in English. The title, abstract and keywords in every manuscript should be written both in Turkish and English. However, manuscripts submitted by foreign authors outside of Turkey do not necessarily include Turkish title, abstract and keywords. Turkish articles are also accepted in the journal. Submitted Turkish articles will be translated into English after being included in the publication plan.

Preliminary conditions for the approval of the manuscripts include being original, having a high scientific value and having high citation potential.

Submitted manuscripts should not have been presented or published elsewhere in electronic or printed format. A statement should be included for the previous submission to and rejection by another journal. Relaying previous reviewer evaluation reports would accelerate the evaluation process. The name, date and place of the event must be specified if the study has been previously presented at a meeting.

The authors transfer all copyrights of the manuscript relevant to the national and international regulations to the journal as of the evaluation process. Copyright Transfer Form signed by all authors should be submitted to the journal while uploading the manuscript through the online submission system. All financial liability and legal responsibility associated with the copyright of the contained text, table, figure, picture, and all other sorts of content protected by national and international laws belong to the author.

Author Contribution Form should be completed by the corresponding author in order to protect authors' rights and avoid ghost and honorary authorship issues.

All kinds of aids and support received from persons and institutions should be declared, and ICMJE Uniform Disclosure Form for potential conflicts of interest should be completed to clarify conflicts of interest issues.

The presentation of the article types must be designed in accordance with trial reporting guidelines:

Human research: Helsinki Declaration as revised in 2013

Systematic reviews and meta-analyses: PRISMA guidelines

Case reports: the CARE case report guidelines

Clinical trials: CONSORT

Animal studies: ARRIVE and Guide for the Care and Use of Laboratory Animals

Ethics committee report prepared in accordance with "WMA Declaration of Helsinki-Ethical Principles for Medical Research Involving Human Subjects" and "Guide for the Care and Use of Laboratory Animals" is required for experimental and clinical studies, drug investigations, and some case reports. The authors may be asked to submit an ethics committee report or a substitute official report if deemed necessary. In papers reporting the results of experimental studies, after explaining in detail all procedures that the volunteer subjects and patients underwent, a statement should be included in the text indicating that all subjects provided consent for the study. In animal studies, it should be clearly specified how the pain or discomfort has been relieved. Informed consent, name of the ethics committee, issue number and date of the approval document should be written in the Methods section of the main document.

All manuscripts are subject to preliminary evaluation by the Editors. The manuscripts are reviewed for possible plagiarism, replication and duplicated publication during this process. Our journal will impose sanctions in accordance with the guidelines of the Committee on Publication Ethics (COPE) in conditions where such non-ethical issues may arise. Subsequently, manuscripts are forwarded to at least 2 independent referees for double-blinded peer-review. The reviewers are selected among independent experts with international publications and citations on the subject of the manuscript. Research articles, systematic reviews and meta-analyses are also evaluated by a statistician. Authors are deemed to have accepted that required revisions are to be made by the Editors, provided that this will not make a comprehensive change in the original document.

Upon approval of the manuscript for publication, requests of addition to or removal from the author list or order change will not be accepted.

The manuscripts should be prepared with Microsoft Office Word and should comply with the following specifications.

Title Page

For each type of manuscript, the title page should be uploaded through the online submission system as a separate Microsoft Word document that includes the Turkish and English title of the manuscript, names of the authors and latest academic degrees, name of the department and institution, city, and country. If the study has been conducted in more than one centre, the affiliation of each author must be specified using symbols. Correspondence address should include the name of the corresponding author, postal address, e-mail address, phone and fax numbers. Name, date and place of the meeting must be specified if the study has been presented in a previous meeting. Disclosure of Conflict of Interest, Disclosure of Institutional and Financial Support, Author Contribution and Acknowledgments should be included on this page.

Original Research: Abstract should be written in Turkish and English, and be structured with Objective, Methods, Results and Conclusion sections. The abstract should not exceed 250 words. Keywords must conform

INSTRUCTIONS TO AUTHORS

to Medical Subject Headings (MeSH) terms prepared by the National Library of Medicine (NLM) and contain minimum 3 and maximum 6 items; keywords should be written in Turkish and English just below the abstract. The main text should contain Introduction, Methods, Results, Discussion, Limitations of the Study, Conclusion, References, Tables, Figures and Images, and should be limited to 5000 words excluding references. References not exceeding 50 would be acceptable.

Statistical analyses must be conducted in accordance with the international statistical reporting standards (Altman DG, Gore SM, Gardner MJ, Pocock SJ. Statistical guidelines for contributors to medical journals. *Br Med J* 1983; 7; 1489-93). Statistical analyses should be written as a subheading under the Methods section, and statistical software must certainly be specified. Data must be expressed as mean±standard deviation when parametric tests are used to compare continuous variables. Data must be expressed as median (minimum-maximum) and percentiles (25th and 75th percentiles) when non-parametric tests are used. In advanced and complicated statistical analyses, relative risk (RR), odds ratio (OR), and hazard ratio (HR) must be supported by confidence intervals (CI) and p values.

Editorial Comments: Editorial comments aim at providing brief critical commentary by the reviewers having expertise or with high reputation on the topic of the research article published in the journal. Authors are selected and invited by the journal. Abstract, Keywords, Tables, Figures, Images and other media are not included. The main text should not include subheadings and be limited to maximum 1500 words; references should be limited to 15.

Review: Reviews that are prepared by authors who have extensive knowledge on a particular field and whose scientific background has been translated into a high volume of publication and higher citation potential are taken under review. The authors may be invited by the journal. Reviews should be describing, discussing and evaluating the current level of knowledge or topic used in the clinical practice and should guide future studies. The manuscript contains an unstructured abstract not exceeding 250 words. The manuscript should include minimum 3 and maximum 6 keywords which conform to Medical Subject Headings (MeSH) terms prepared by National Library of Medicine (NLM). The main text should contain Introduction, Clinical and Research Consequences and Conclusion sections. The main text should not exceed 5000 words, and the references should be limited to 50.

The originality of the visual media contained in the reviews should be confirmed by submitting a letter to the journal. The original versions of the electronic copies of the images adapted from a published source should be cited properly, and the written permission obtained from the copyright holder (publisher, journal or authors) should be forwarded to the journal.

Case Report: There is limited space for case reports in the journal and reports on rare cases or conditions that constitute challenges in the diagnosis and treatment, those offering new therapies or revealing knowledge not included in the books, and interesting and educative case reports are accepted for publication. The abstract should be unstructured and should not exceed 250 words. The manuscript should include

minimum 3 and maximum 6 keywords which conform to Medical Subject Headings (MeSH) terms prepared by National Library of Medicine (NLM). The text should include Introduction, Case Report, Discussion, References, Tables, Figures and Images sections, and should be limited to 700 words. References should be limited to 10.

Video Article

In addition to the pictures in Case Reports and Original Images, video/motion images and extra images / static images can be published on the web page of our journal if submitted with the following technical specifications.

1. Video articles should include a brief introduction on case, surgery technique or a content of the video material.
2. Presentations in image / static image format: JPG, GIF, TIFF, BMP
3. Presentations in video / motion picture format: MP4
4. The file size should be a maximum of 100 MB.
5. The file size should be no more than 10 minutes.
6. Main text should not exceed 500 words.
7. References are welcomed and should not be more than 5.
8. Video and images must be cited within main text.
9. There should be no identification of patient / physician / institution / city / country in pictures and especially video images.

The tables, figures and illustrations included in your article should be declared as original. When received from sources other than the original, the source must be cited, and hardcopy format or electronic versions of the source should be submitted to the Editor-in-Chief office with permission from the copyright holder (publisher, journal or author). The rules for references, figures and tables apply to all article types.

Letter to the Editor: Includes manuscripts discussing important parts, overlooked aspects or lacking parts of a previously published article. Articles on the subjects within the scope of the journal that might attract the readers' attention, particularly educative cases, can also be submitted in the form of "Letter to the Editor". Readers can also present their comments on the published manuscripts in the form of "Letter to the Editor". Abstract, Keywords, Tables, Figures, Images and other media are not included. The text should be unstructured and should not exceed 500 words; references are limited to 5. Volume, year, issue, page numbers, and title of the manuscript being commented on, as well as the name of the authors, should be clearly specified, should be listed in the references and cited within the text.

Images in Clinical Practices: Our journal accepts original high quality images related to the cases which we have come across in clinical practices, that cites the importance or infrequency of the topic, makes the visual quality stand out and present important information that should be shared in academic platforms. Titles of the images should not exceed 10 words and should be provided both in English and Turkish. Images can be

INSTRUCTIONS TO AUTHORS

signed by no more than 3 authors. Figure legends are limited to 200 words and the number of figures are limited to 3. Video submissions will not be considered.

Special Considerations

Names of the corresponding author and other authors, affiliations, and other information on the study centers should not be included in any part of the manuscript or images in order to allow double-blinded peer-review. Such information should be uploaded to the relevant section of the online submission system and separately added to the title page.

All tables, figures, graphs and other visual media must be numbered in order of citation within the text and must not disclose the names of the patients, doctors or institutions. Tables must be prepared in a Microsoft Office Word document using the "Insert Table" command and be placed at the end of the references section in the main document. Tables should not be submitted in JPEG, TIFF or other visual formats. In microscopic images, magnification and staining techniques must be specified in addition to figure captions. All images should be in high resolution with minimum 300 dpi. Lines in the graphs must be in adequate thickness. Therefore, loss of details would be minimal if a reduction is needed during press. The width must be 9 cm or 18 cm. It would be more appropriate if the drawings are prepared by professionals. Gray color should be avoided. Abbreviations must be explained in alphabetical order at the bottom. Roman numerals should be avoided while numbering the Tables and Figures, or while citing the tables in the text. Decimal points in the text, tables and figures should be separated by a comma in Turkish sections and by dots in English sections. Particularly, tables should be explanatory for the text and should not duplicate the data given in the text.

Pharmaceuticals should be specified with their generic names, and medical products and devices should be identified with brand name and company name, city and country.

References

References should be numbered in the order they are cited. Only published data or manuscripts accepted for publication and recent data should be included. Inaccessible data sources and those not indexed in any database should be omitted. Titles of journals should be abbreviated in accordance with Index Medicus-NLM Style (Patrias K. Citing medicine: the NLM style guide for authors, editors, and publishers [Internet]. 2nd ed. Wending DL, technical editor. Bethesda (MD): National Library of Medicine (US); 2007 - [updated 2011 Sep 15; cited Year Month Day] (<http://www.nlm.nih.gov/citingmedicine>). All authors should be listed if an article has six or less authors; if an article has more than six authors, first six authors are listed and the rest is represented by "ve ark." in Turkish articles and by "et al." in English articles. Reference format and punctuation should be as in the following examples.

Journal: Muller C, Buttner HJ, Peterson J, Roskomun H. A randomized comparison of clopidogrel and aspirin versus ticlopidine and aspirin after placement of coronary artery stents. *Circulation* 2000;101:590-3.

Book Section: Sherry S. Detection of thrombi. In: Strauss HE, Pitt B, James AE, editors. *Cardiovascular Medicine*. St Louis: Mosby; 1974.p.273-85.

Books with Single Author: Cohn PF. Silent myocardial ischemia and infarction. 3rd ed. New York: Marcel Dekker; 1993.

Editor(s) as author: Norman IJ, Redfern SJ, editors. *Mental health care for elderly people*. New York: Churchill Livingstone; 1996.

Conference Proceedings: Bengissson S. Sothemin BG. Enforcement of data protection, privacy and security in medical informatics. In: Lun KC, Degoulet P, Piemme TE, Rienhoff O, editors. *MEDINFO 92. Proceedings of the 7th World Congress on Medical Informatics*; 1992 Sept 6-10; Geneva, Switzerland. Amsterdam: North-Holland; 1992.p.1561-5.

Scientific or Technical Report: Smith P. Golladay K. Payment for durable medical equipment billed during skilled nursing facility stays. Final report. Dallas (TX) Dept. of Health and Human Services (US). Office of Evaluation and Inspections: 1994 Oct. Report No: HHSIGOE 169200860.

Thesis: Kaplan SI. Post-hospital home health care: the elderly access and utilization (dissertation). St. Louis (MO): Washington Univ. 1995.

Manuscripts accepted for publication, not published yet: Leshner AI. Molecular mechanisms of cocaine addiction. *N Engl J Med* In press 1997.

Epub ahead of print Articles: Aksu HU, Ertürk M, Gül M, Uslu N. Successful treatment of a patient with pulmonary embolism and biatrial thrombus. *Anadolu Kardiyol Derg* 2012 Dec 26. doi: 10.5152/akd.2013.062. [Epub ahead of print]

Manuscripts published in electronic format: Morse SS. Factors in the emergence of infectious diseases. *Emerg Infect Dis* (serial online) 1995 Jan-Mar (cited 1996 June 5): 1(1): (24 screens). Available from: URL: <http://www.cdc.gov/ncidod/EID/cid.htm>.

The latest status of the submitted manuscripts and other information about the journal can be accessed at www.bezmialemscience.org. Furthermore, contact details of the Editorial Office and Publisher are provided below for correspondence with the journal in every respect.

Editor: Adem AKÇAKAYA, MD, Prof.

Address: Bezmialem Vakif University, Adnan Menderes Boulevard, Fatih, Istanbul

Phone: +90 (212) 453 17 00

Fax: +90 (212) 621 75 80

E-mail: info@bezmialemscience.org

Publisher Info: Galenos Publishing House

Address: Molla Gürani Mahallesi Kaçamak Sokak No: 21 34093 Fındıkzade - Istanbul/Turkey

Phone: +90 (530) 177 30 97

E-mail: info@galenos.com.tr

CONTENTS

Original Articles

- 1 **Morphometric Analysis of the Foramen Palatinum Majus by Cone-beam Computed Tomography**
Melek TAŞSÖKER, Duygu AZMAN, Anıl Didem AYDIN KABAKÇI; Konya, Turkey
- 8 **Is Ileostomy an Obligation Following Rectal Resection? The Role of Rectal Tube Instead of Ileostomy**
Ersin GÜNDOĞAN, Cüneyt KAYAALP, Fatih SÜMER; Kayseri, Malatya, Turkey
- 15 **Ivermectin Induces Oxidative Stress and DNA Damage in Breast Cancer Cells**
Eray Metin GÜLER, Ayşenur GÜNAYDIN AKYILDIZ; İstanbul, Turkey
- 23 **The Medicinal Effects of Different Solvent Extracts of *Pyracantha Coccinea* Roem. Fruits: Heavy Metal Content, Antioxidant, and Antimicrobial Properties**
Neslihan Tekin KARACAER; Aksaray, Turkey
- 32 **Evaluation of Musculoskeletal Disorders and the Effect of Ergonomic Conditions in Karadeniz Technical University Students Receiving Distance Education Due to COVID-19**
Ümmügülsüm ÖZEL, Kübra ŞAHİN, Medine Gözde ÜSTÜNDAÇ, Murat TOPBAŞ, Nazım Ercüment BEYHUN; Trabzon, Turkey
- 40 **An Altmetric Analysis of Top 100 cited articles on Perinatal Infection**
Deniz BORCAK, Hatice BULUT; İstanbul, Turkey
- 48 **Describing Effectiveness of Performing International Classification of Function, Disability and Health on Children with Cerebral Palsy**
Ahmed Hamood AL SAKKAF, Uğur CAVLAK, Erdoğan KAVLAK; Denizli, Trabzon, Turkey
- 61 **Comparative Analysis of Tertiary Stroke Center: Factors Affecting the 3rd Month Clinical Outcome of Patients Treated with Thrombolytic Treatment**
Hasan Hüseyin KARADELİ, Ruken ŞİMŞEKOĞLU, Didem ÇELİK1, Selin ÖZMEN, Zarife Tuğçe YILDIZ; İstanbul, Turkey
- 68 **Evaluation of the Relationship Between Maxillary Labial Frenulum Attachment Types, Periodontal Health, and Dental Caries in Preschool Children**
Pınar KINAY TARAN, Şerife ÖZDEMİR, Bilge AKARCA, Hilal YÜKSEL; İstanbul, Turkey
- 74 **Fatal Poisonings: Autopsy-Based Study**
Mehtap GÜRGER, Nazif Harun VİCDANLI, Abdurrahim TÜRKOĞLU, Turgay BÖRK, Vahap GÖÇÜK; Elazığ, Turkey
- 80 **Physical Activity and Perceptions of Exercise in Patients with Spondyloarthritis: A Cross-Sectional Study**
Kevser GÜMÜŞSU, Saliha EROĞLU DEMİR, Meryem GÜNEŞER GÜLEÇ, Aylin REZVANI, Teoman AYDIN; İstanbul, Turkey

CONTENTS

- 88** Investigation of Proprioception and Kinesthesia Sensations in the Upper Extremities of Children with Childhood Cancer
Zeynep KOLİT, Ceren DAVUTOĞLU, Meral HURİ, Sedef ŞAHİN; Ankara, Turkey
-
- 95** Comparison of Glasgow Blatchford and New Risk Scores to Predict Outcomes in patients with Acute Upper GI Bleeding
Bahadır TAŞLIDERE, Elmas BİBERCİ KESKİN, Serdar ÖZDEMİR, Ahmet ATŞIZ, Ertan SÖNMEZ; İstanbul, Turkey
-
- 103** Optimal Follow-up Duration for Traumatic Multiple Rib Fractures
Murat Sarıçam, Oya Güven; Kırklareli, Turkey
-
- 108** Sarcopenia is Associated with Postoperative Complications in Patients Undergoing D2 Gastrectomy for Gastric Cancer
Ali ALEMDAR, Özgür BAHADIR, Recep Yılmaz BAYRAKTARLI, Suzan Deniz ÖNOL, İsmail YILMAZ; İstanbul, Turkey
-
- 116** Patient Safety in the Surgery: An Investigation of the Near-miss Cases Encountered by the Surgical Team While Applying the Surgical Safety Checklist
Sultan BOZKURT, Hilal TÜZER; Ankara, Turkey
-
- 124** Merkel Cell Carcinoma
Selma SÖNMEZ ERGÜN, Ahmet KİRAZOĞLU, Osman Cemil AKDEMİR, Özlem Su KÜÇÜK, Pelin ALTINOK, Pelin YILDIZ; İstanbul, Turkey
-
- 128** Palliative Care and Phytotherapy in Patients with Cancer
Melike Nur AKBAŞ, Adem AKÇAKAYA, Murat KARTAL; İstanbul, Turkey
-